

ORIGINAL MEMBERS OF

---

---

THE KT BUSH BAND

---

---

BACK AFTER 39 YEARS

PERFORMING THE MUSIC OF

KATE BUSH

THE EARLY YEARS



# How it all began - Brian's story

Paddy Bush, Vic, Del and I were always great musical friends, often hanging out together. One day shortly after a gig at Whitechapel Art Gallery, Paddy said that Kate was looking for some live experience and wanted to join a band, as she was about to record her first album with EMD. I said I would definitely endeavour to sort out a band.

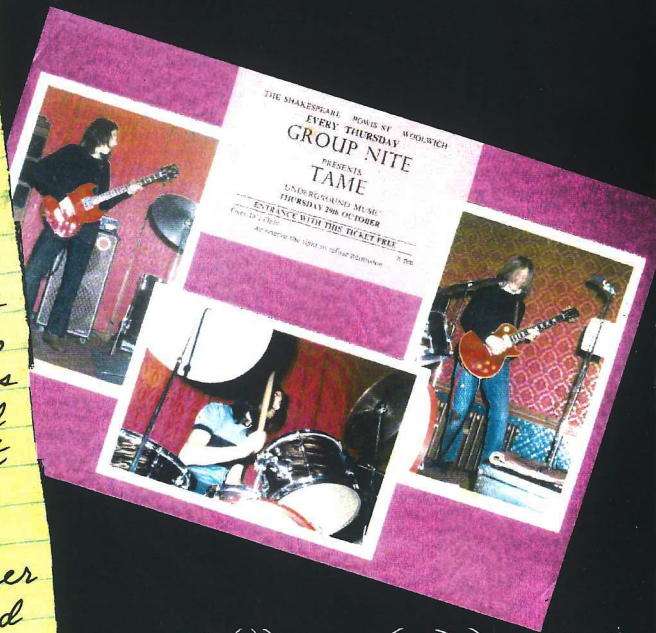
My immediate reaction was to get the old TAME band from school back together. I rushed around to Del Palmer's house, explaining that tons of gigs would come our way, that Kate was a great singer, had great looks and with her theatrical tendencies she could front a band for sure! It seems Kate had also approached Vic at the Whitechapel gigs and it wasn't long before we had a rehearsal organised.

So, we met with Kate and she was more than eager to get the band out there. We immediately started work rehearsing some songs that would blow the socks off any competition on the pub circuit. We all went with Pa Bush to the Fender Soundhouse in Manchester Square to get a mic for Kate, and from the range available Kate chose the favourite professional mic of the time, a Shure Unidyne.

Rehearsals for the KT Bush Band began in earnest. After a first try in a room at the swimming baths, we cleared out and set up our equipment in the Barn at Kate's home, The Farm. It was midwinter and absolutely freezing.

We needed a gig to try the band out, so I went to the Rose of Lee pub one night, and got the gunner interested in the band. I said we would guarantee 20 people week one, bodies up to the bar the second, down to the other end the third, and packed on the fourth! This is precisely what happened. What a gig it became - dry ice during "James and the Cold Gun" at the end of the evening where Kate went around with a pretend rifle, mock shooting at the audience!

As we were all working at the same time as performing, we juggled late nights, and early starts with exhausting schedules: Up at 7am, home at 5pm, off to gigs, home at 2am, back to work - and around it went!



# Then & Now - Vic's story

Brian and I have different memories of how it all started, both having been approached in different ways.

I remember Brian used to go round with his guitar to see Kate's brother Paddy, they played music together at Kate's house and Brian knew Kate had some great songs even though she was very young.

One Friday in November 1976, Brian and I played a 45min set at an Arts event at The Whitechapel Art Gallery, and it was there that Kate came up from the audience and said we were amazing and asked me how she could join a band. My response (as always when asked that) was if she could learn ten cover songs such as some Beatles, Motown and Soul and give me a call I would set up a rehearsal. It was about five days later when Kate got in touch and asked 'When can we get together?'. I booked the basement studio of Greenwich swimming baths for our first of many rehearsals. Later we took over the 'farm outbuilding' and the rest is history.



Later of course, when Kate's career as a solo artist took off, record company policy made it difficult for us to continue performing as we had, so we decided to dissolve the band and I went off and worked with many other bands. When Brian and Del joined forces to work with Kate on live shows a year or so later I was working with someone else so I didn't get involved but we all kept in touch.

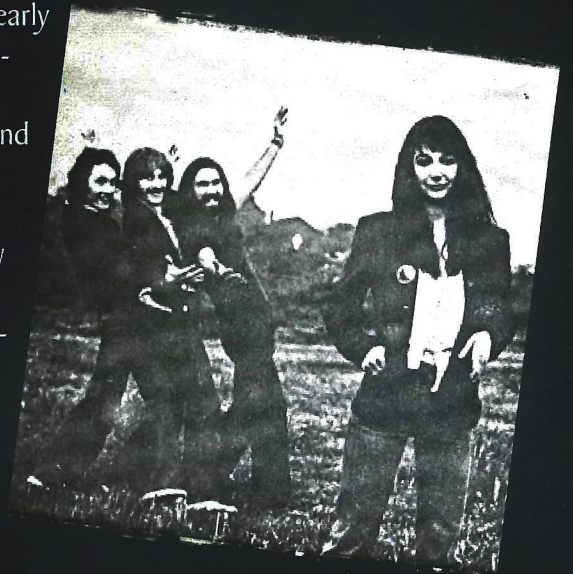
Brian and I both had our separate bands, but we continued to work together on and off, with Steve Bevan on Bass. The idea of playing the early Kate songs and covers again without the involvement of a record company kept nagging at me, and I suggested to Brian that we should get the band back together several times. In 1990, then again in 2001, and in 2012... but on each occasion there were doubts and difficulties.

It was in early 2014 that Brian got excited about the idea - with a few pertinent questions. "Are you serious? Can we do it? Where will we find someone who can sing like Kate? Where are we going to find like-minded players who will want to do it?" He need not have worried, Steve jumped on board to play Bass when I mentioned that Brian was thinking seriously about it. So the three of us prepared six songs and finally booked into a studio in October 2014. It was amazing affirmation of our idea that Kate was finally back on stage around the same time.

Next step was to add a keyboard player. We asked around our known contacts, calling and emailing studios and checking music shops for musicians available, and using internet directories. I shortlisted 20 people and tempted Rob into auditioning first as he was both highly capable and versatile. With six songs prepared, we ran through and he was in.

The hardest part was that out of 100 vocalists on my list, every one of them was missing some part of the essential mix; either the range, the style, or the approach. It was pure chance in the end that Steve mentioned our search in the local music shop and Jodie was recommended. We were soon back in the studio for another run through where Jodie proved that she could handle Kate's songs with ease.

So, many months of hard work later, here we are. Warm-up performances done to invited audiences, and ready to bring back the exciting times of the early KT Bush Band.

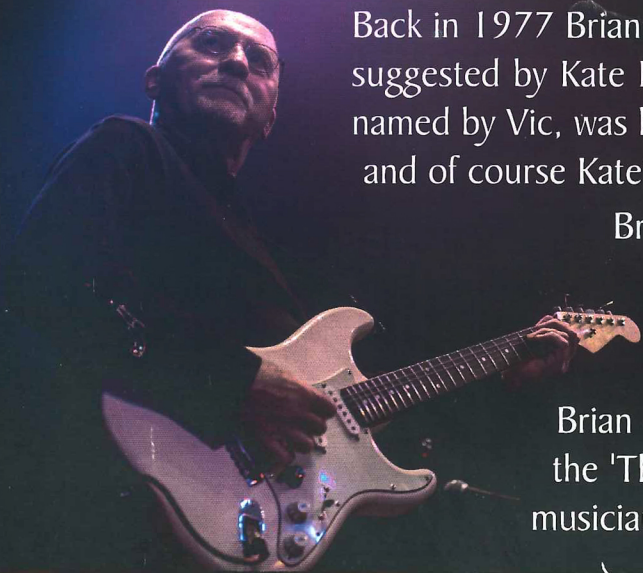








## BRIAN BATH - Acoustic & Electric Guitars



Back in 1977 Brian and school-mates Vic and Del formed a new band as suggested by Kate Bush's Dad, "Pa Bush". The KT Bush Band, thus named by Vic, was born. The set was built from covers, Brian's songs, and of course Kate's songs which we now know well.

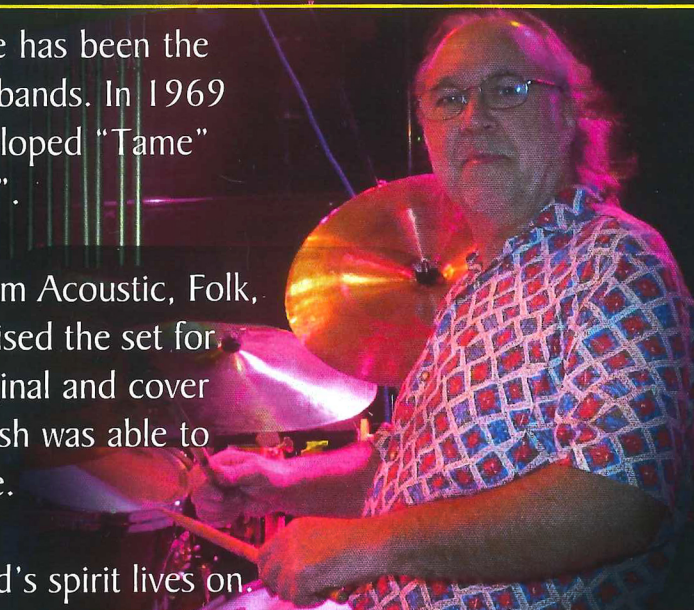
Brian's work features on albums and singles such as "Wow", "Babooshka" and "Never Forever", he plays lead on "The Wedding List" and also soloed on "Pull out the Pin" to David Gilmour's haunting vocals.

Brian can be seen with Kate in TV shows, videos, and on the 'TheTour of Life' show circa 1979, Brian is a session musician, songwriter, arranger, fun cartoonist and illustrator.

## JODIE MAY SEYMOUR - Vocals



## VIC KING - Drums & Percussion



During Vic's 45 year career playing Drums, he has been the driving force behind the creation of many new bands. In 1969 along with Brian Bath and Del Palmer, he developed "Tame" which was later to become "the KT Bush Band".

With his encyclopaedic knowledge of music from Acoustic, Folk, Pop, Rock, Blues, Big Band, and Soul, Vic devised the set for the newly formed KT Bush Band, a mix of original and cover tunes that provided a vehicle in which Kate Bush was able to present some of her songs live for the first time.

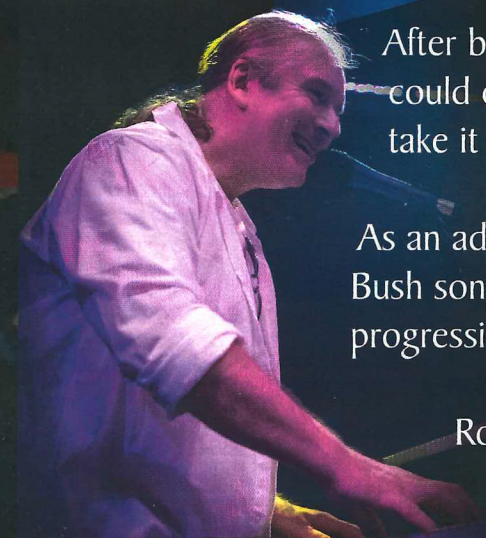
And now he's done it again. The KT Bush Band's spirit lives on.

Jodie May has often been compared to forward-thinking artists like Kate Bush for the strength of her songwriting (having written number one hit record "Falling" for American Idol finalist John Park) and for her eclectic vocal sound.

As a solo artist, her first EP "Tattoo" was made with legendary British producer Jon Kelly - who you might recognise as producer of Kate Bush's great albums "Lionheart", "Never Forever", and several songs on "The Whole Story".

Easily rising to the challenge of the immense Kate Bush vocal range, Jodie loves performing with the band and brings a powerful energy to the stage.

## ROBERT L GERRARD - Keyboards and FX

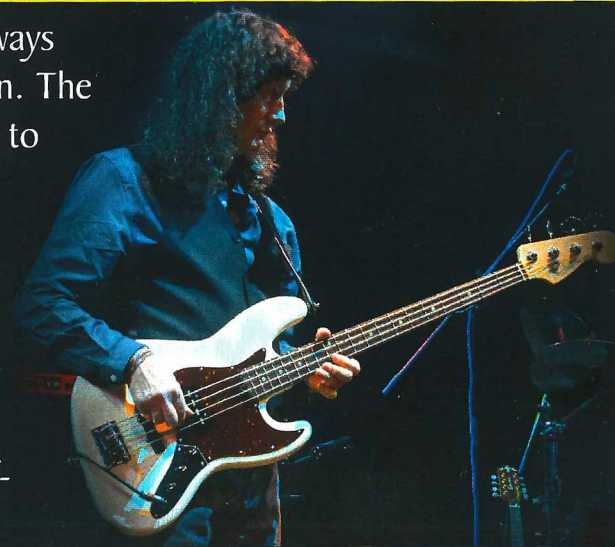


After being contacted by Vic in his search for a keyboard player who could cover all the bases, Rob had to think hard about whether to take it on for about five seconds - but pretended it was five days.

As an admirer of Kate Bush's songwriting, he's been playing a few Kate Bush songs since 1979, alongside all the inevitable keyboard based progressive rock that he still loves and performs elsewhere.

Rob's job is to play all the parts Guitars, Drums and Vocals don't - a trick which he manages by using two keyboards, an iPad, two hands and a lot of tap dancing on foot-pedals.

## STEVE BEVAN - Bass & Mandolin



Having George Shearing as a close relative was always going to ensure Steve got a good musical education. The family's regular diet of quality classical and jazz led to proficiency on Classical Guitar, a fluent melodic style on Bass and dexterity on the fiendishly tiny fretboard of the Mandolin.

Steve has worked with Vic and Brian for some time, and now brings his love of great Bass-lines to the music of Kate Bush, having encouraged their efforts to resurrect the KT Bush Band and more.



All our families and friends for patience while we endlessly rehearsed and plotted and planned this wonderful adventure. We couldn't do it without you.

Promotion and Management - Kev King our secret agent, all theatre and venue management for believing in what we're creating, and those we've yet to meet - deep respect for your faith in a new venture conceived in early 2014, and finally born in 2016.

James Bath for constant encouragement and support. Jana Gerrard for cups of tea, food of all kinds. Izzy for squeezing into the car with Vic's kit, Andy for encouraging jodie to be Kate-like. Steve's mum - for making him Steve.

The many cartoon characters scattered throughout these pages were created by Brian Bath.

Please visit the website for details and listings of future performances:

[www.ktbushband.co.uk](http://www.ktbushband.co.uk)

